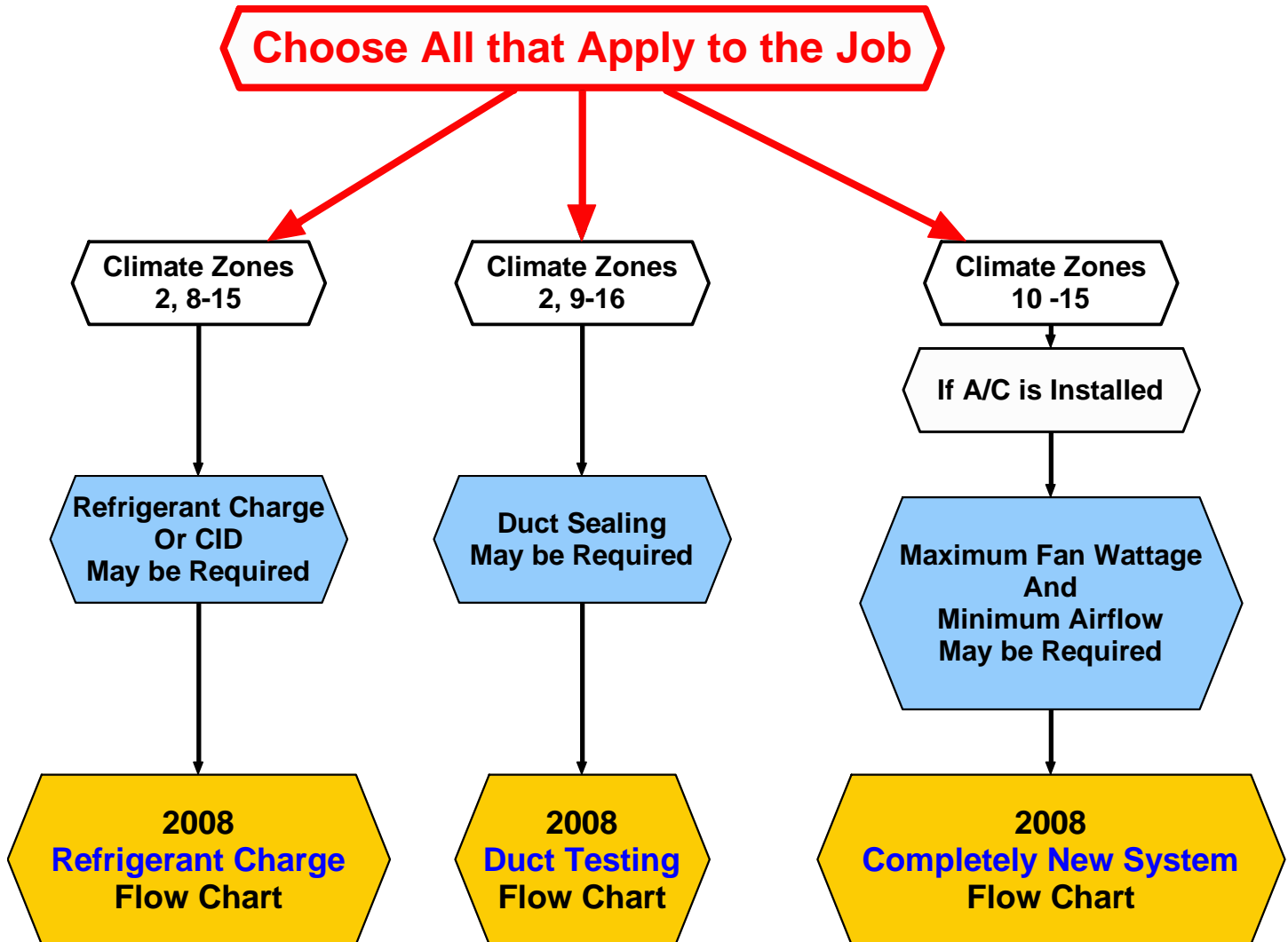


2008 Residential HVAC Change-Outs Flow Chart Guide

For Building Permits applied for on or after 1/01/2010

Copyright D&H Climate Control 2010

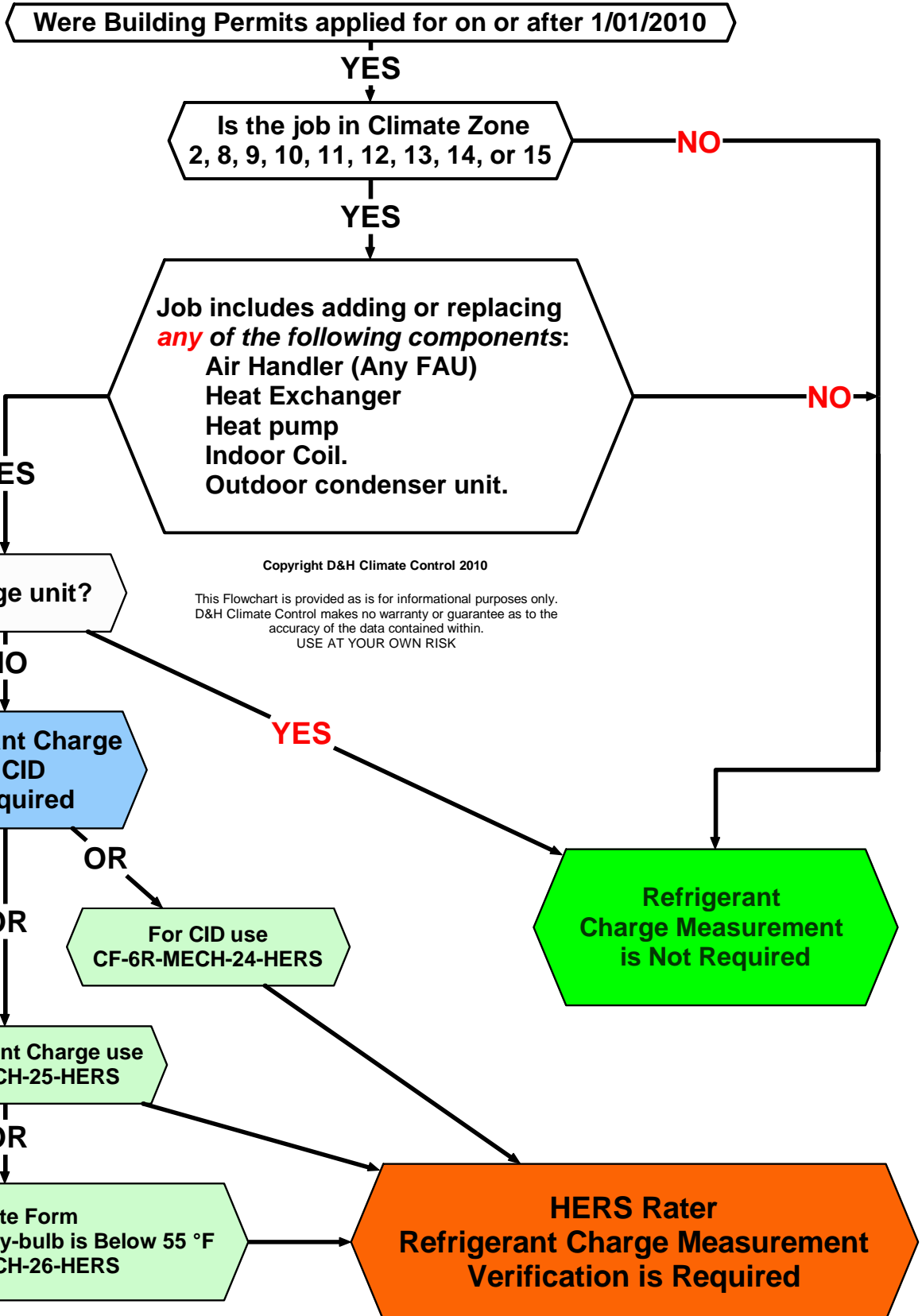


These Flowcharts are provided for informational purposes only.
D&H Climate Control makes no warranty or guarantee as to the
accuracy of the data contained within.
USE AT YOUR OWN RISK

Contact your local building department about additional requirements.
For more information go to <http://hersrater.net>

2008 Residential HVAC Change-Outs

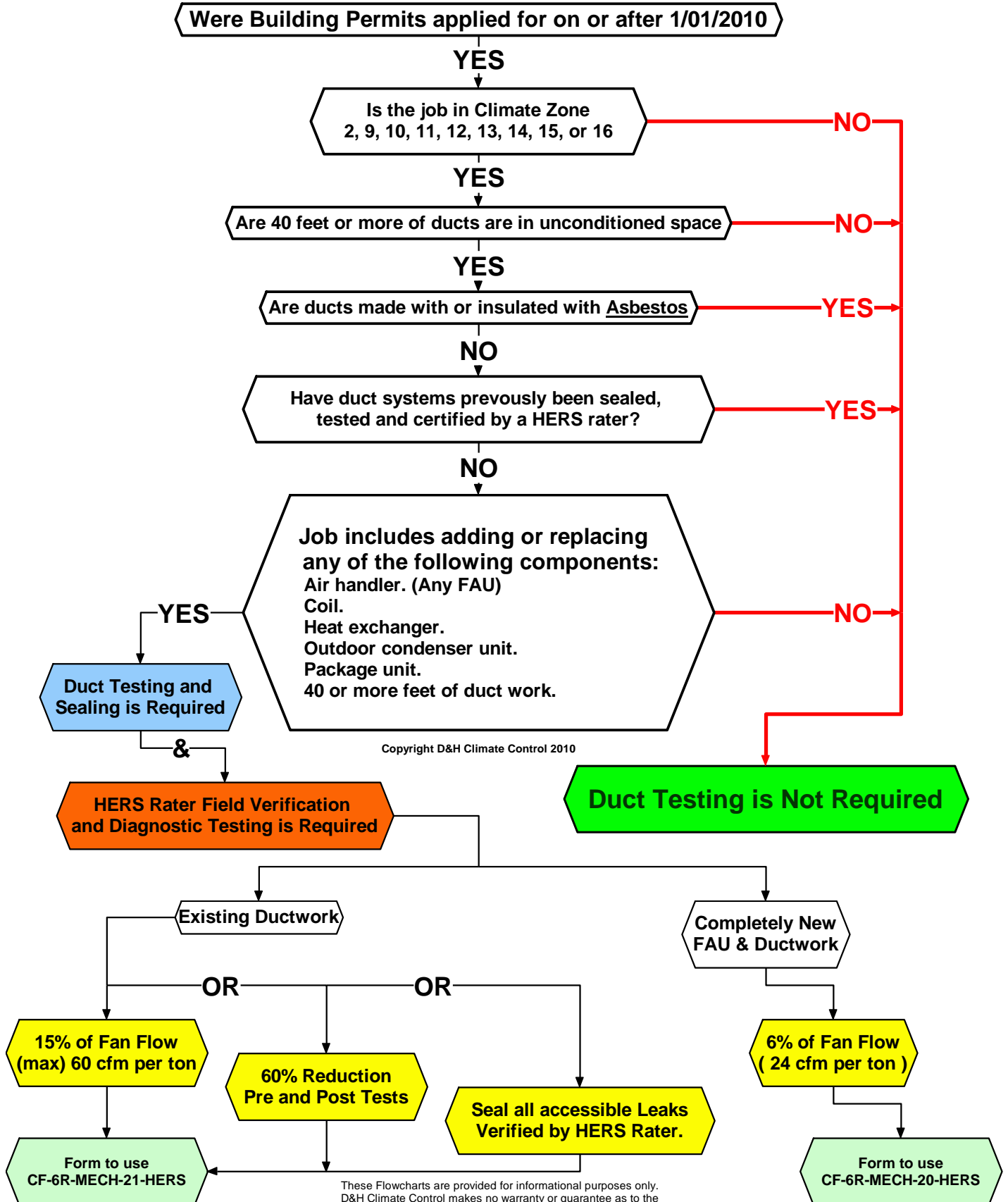
Refrigerant Charge



Contact your local building department about additional requirements.

For more information go to <http://hersrater.net>

2008 Residential HVAC Change-Outs Duct Testing Flow Chart



These Flowcharts are provided for informational purposes only.
D&H Climate Control makes no warranty or guarantee as to the
accuracy of the data contained within.
USE AT YOUR OWN RISK

Contact your local building department about additional requirements.

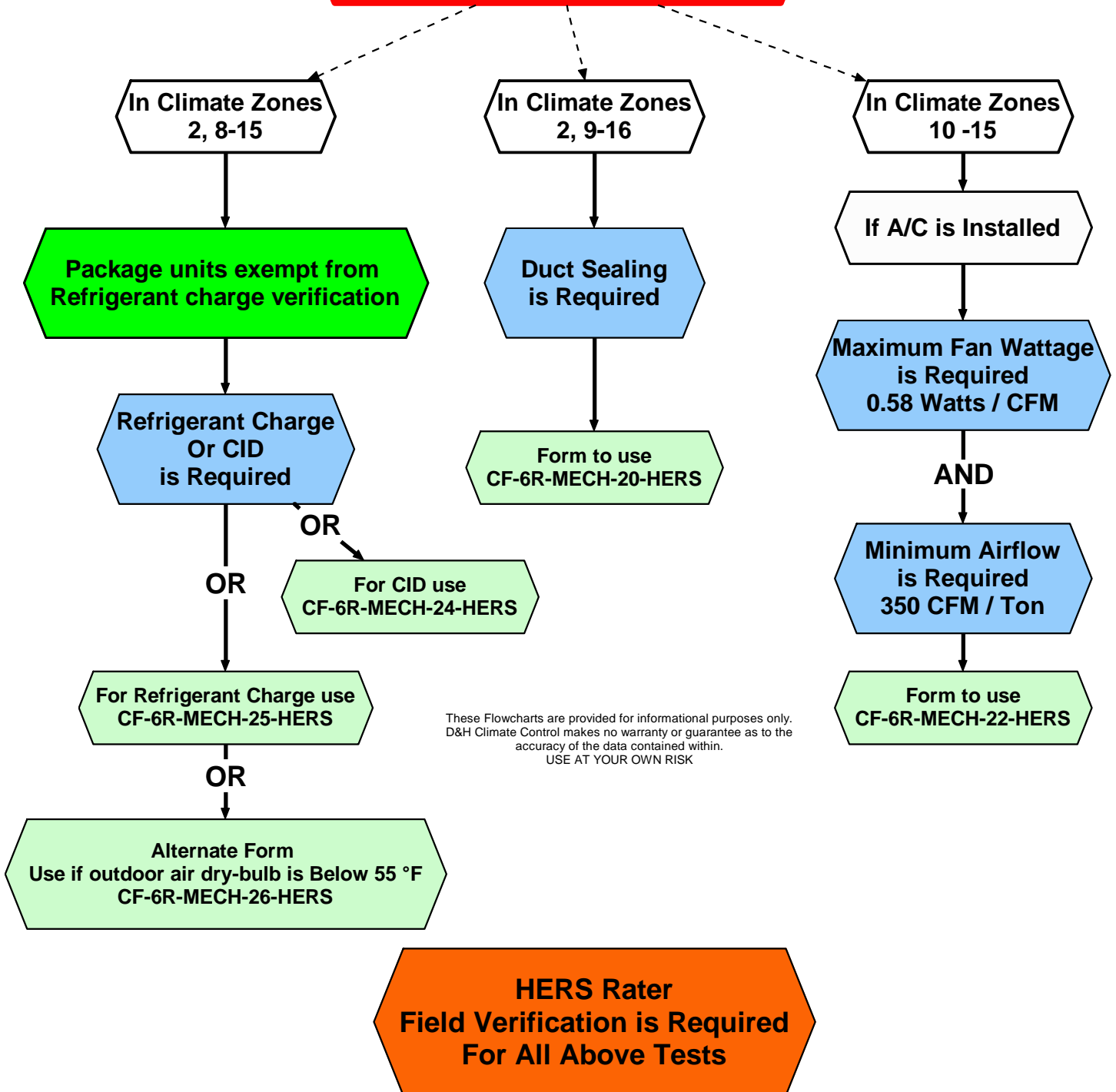
2008 Residential HVAC Change-Outs Completely New System

Equipment, Ducts, etc.

For Building Permits applied for on or after 1/01/2010

Copyright D&H Climate Control 2010

Choose All that Apply to the Job



These Flowcharts are provided for informational purposes only. D&H Climate Control makes no warranty or guarantee as to the accuracy of the data contained within. USE AT YOUR OWN RISK

Contact your local building department about additional requirements.